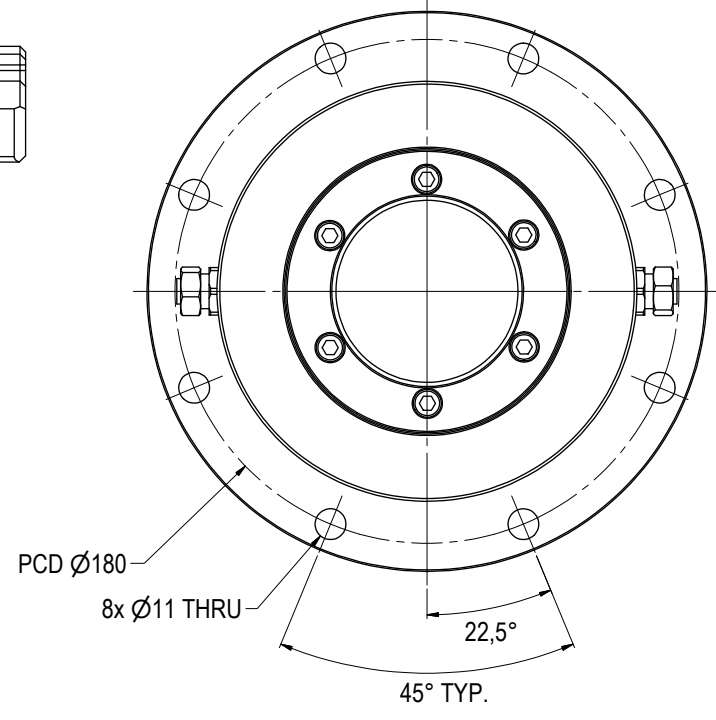
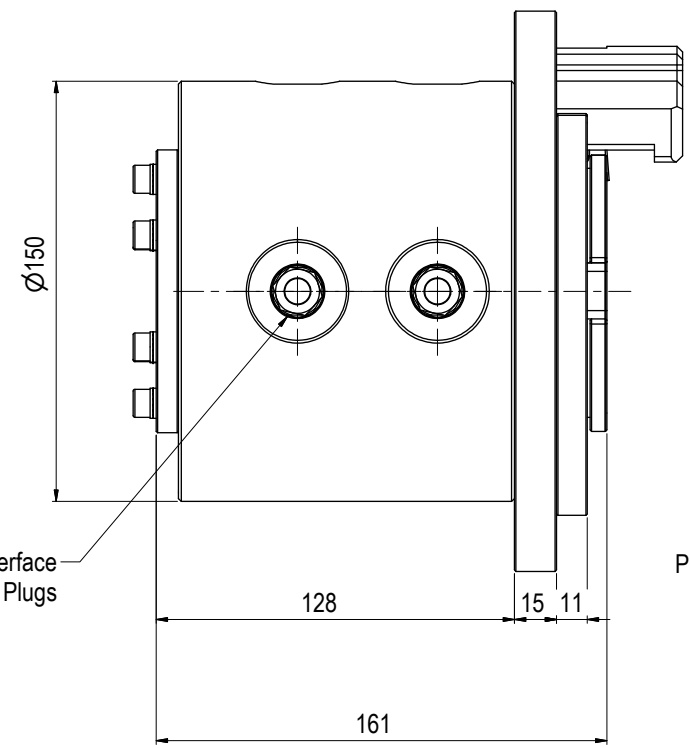


4x 3/8" MP Interface
with 3/8" MP Plugs



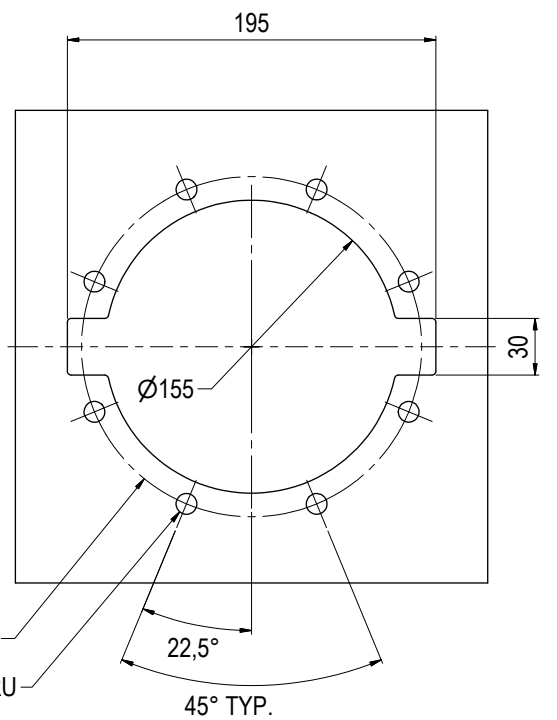
NOTE: 1
DESIGN CODE:
API 6A

NOTE: 2
INTERFACE INFORMATION:
Hydraulic: 2x 9/16" - 4x 3/8" MP Interface
Mechanical: 6x Ø11@PCD 180
Electrical: N/A
Data Com.: N/A

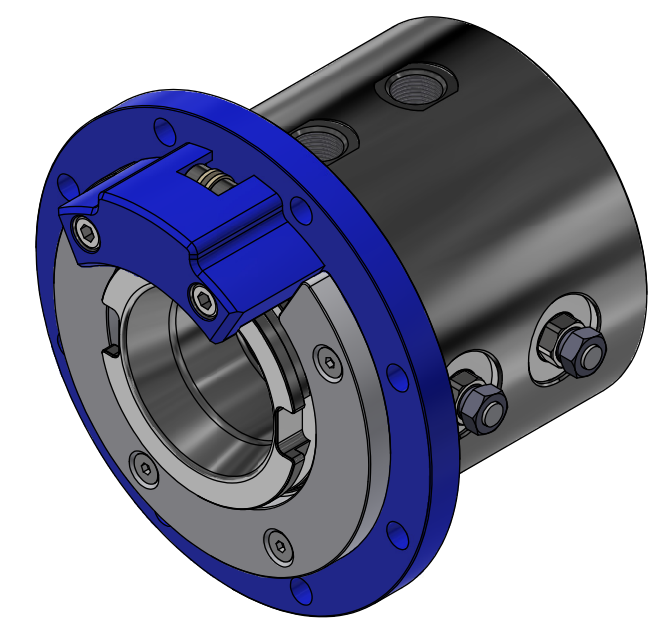
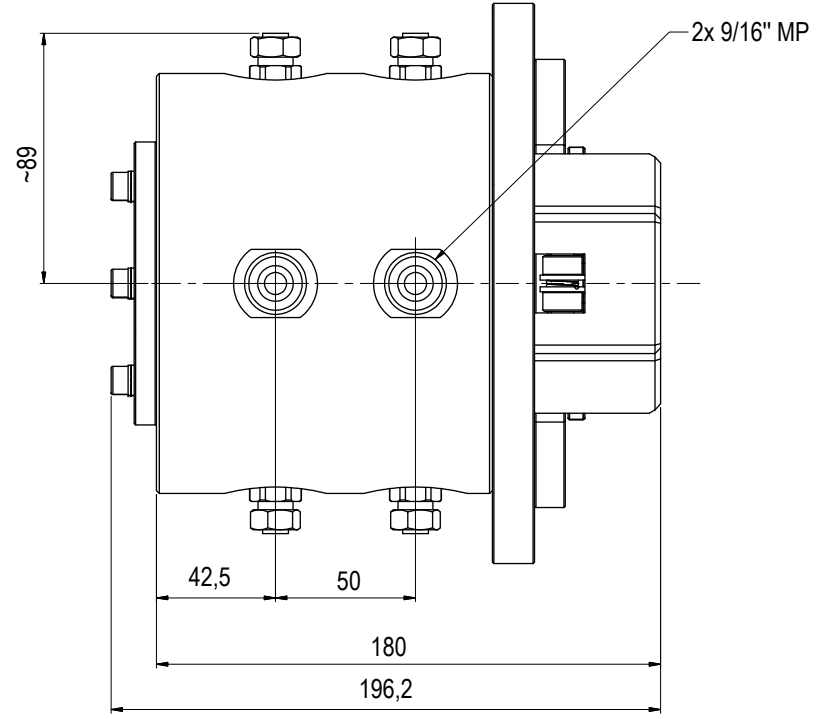
NOTE: 3
PROPERTIES:
Material Class: N/A
Temperature Class: N/A
Rated Work Press Bar: 690
Test Pressure: N/A
Specification Level: N/A
Flow Rate: N/A
Qualification: N/A
Application: Long-term
Load Rating: N/A
Torque Rating: N/A
Design Water Depth: N/A
Weight in Air: 17,8 kg
Volume: 2,37 dm³
Submerged Weight: 15,33 kg

NOTE 4
To be connected to CP System

NOTE 5
Operational torque mated with stab approx. 30Nm



INTERFACE PLATE



03	10.6.2024	9-IFU (Issued for Use)		WTJ	HNJ	WTJ
02	1.11.2023	7-IFC (Issued for Construction)		WTJ	HNJ	WTJ
01	24.3.2023	7-IFC (Issued for Construction)		WTJ	LGH	WTJ
Rev.	Date	Reason for issue	Revision change	Made	Chk'd	Appr.

BLUE LOGIC

This Drawing is the Property of Blue Logic AS © and must Not be Loaned, Reproduced or Transferred to others without written Permission

Dwg Scale:	NTS
Dwg Proj:	
Dwg Format:	A3

Drawing title:	Ø65 DP VStab Rec 10k Long-term	
Drawing number:	BB9756	Rev: 03